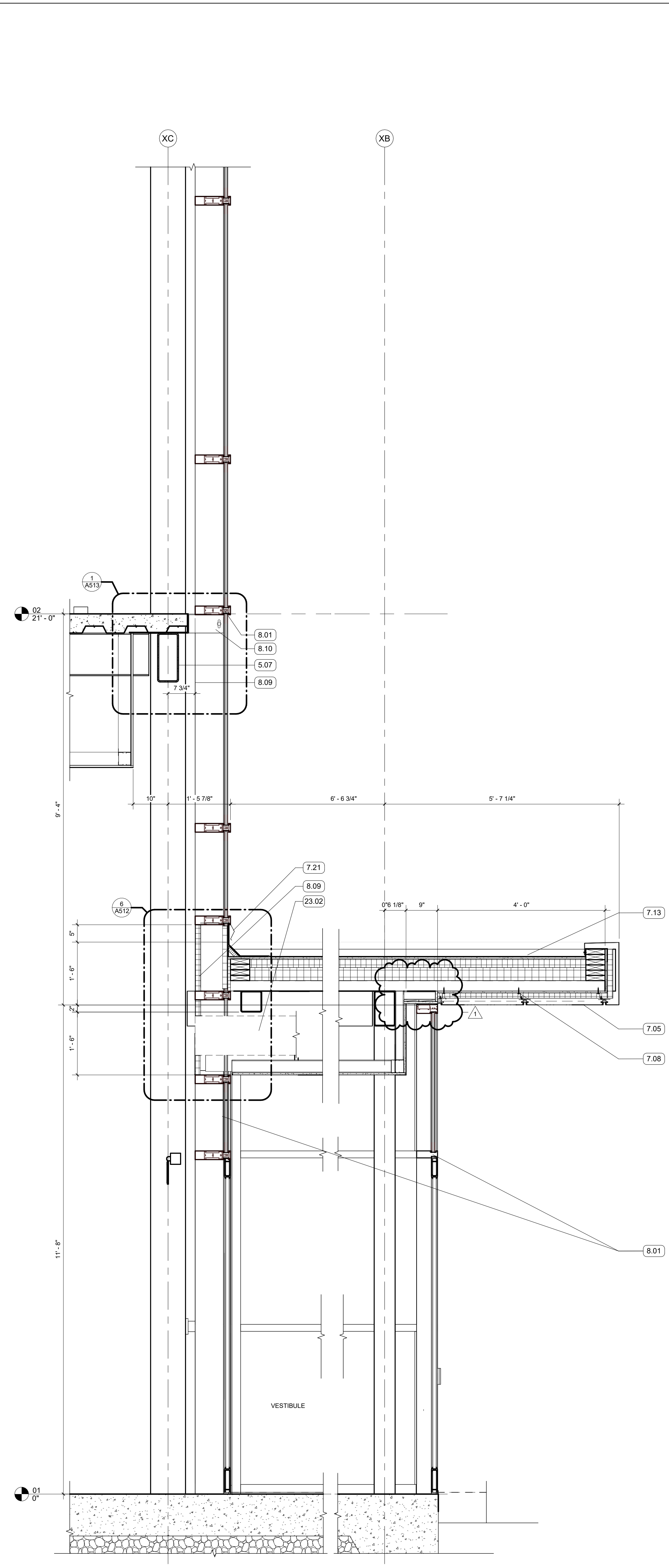
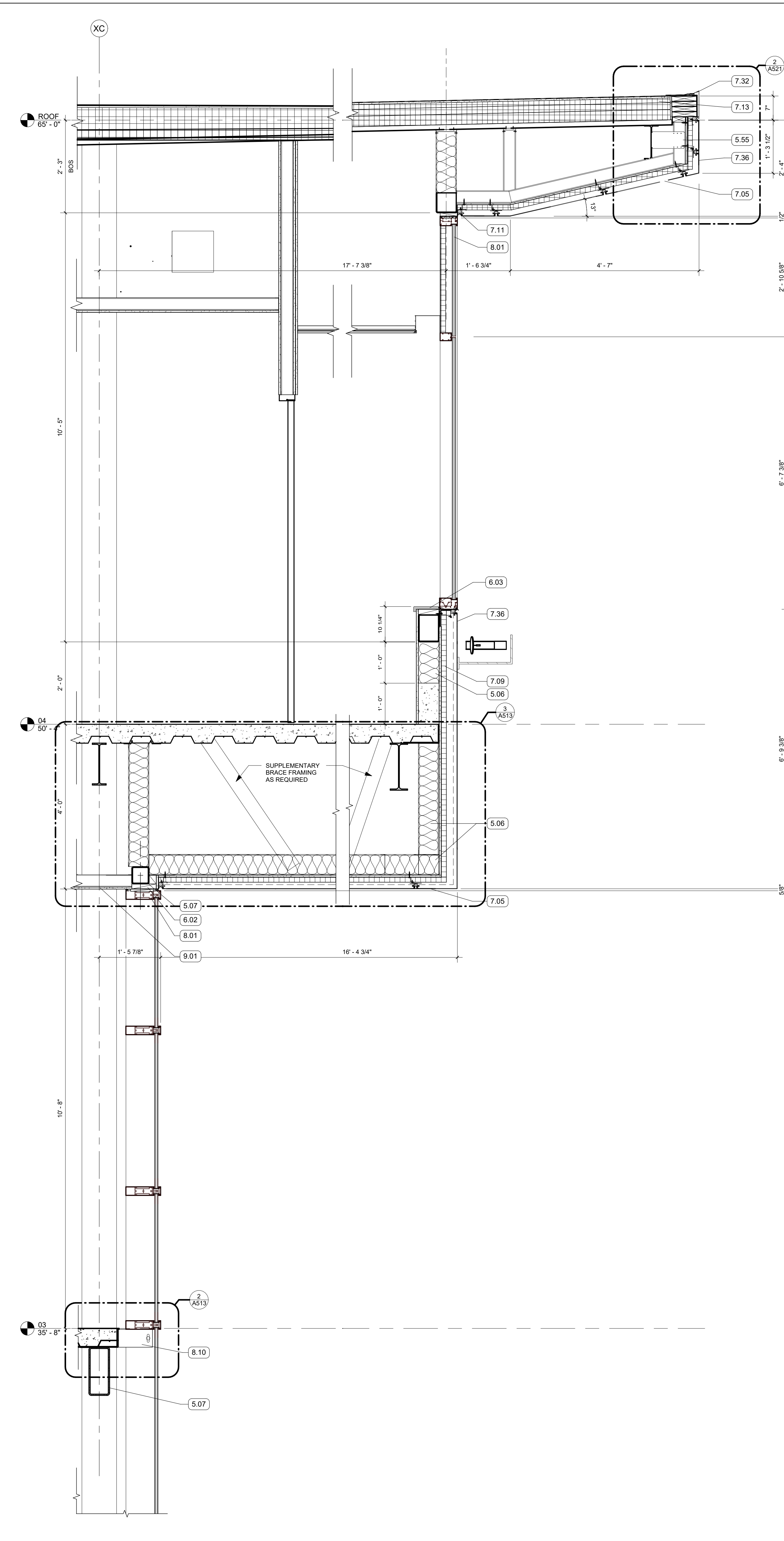


1 WALL SECTION  
3/4" = 1'-0" | RE:1/A101



2 WALL SECTION  
3/4" = 1'-0" | RE:1/A200



3 WALL SECTION  
3/4" = 1'-0" | RE:1/A200

- GENERAL NOTES
- KEYNOTES
- 3.05 CEMENT PARGE COAT ON EXPOSED SLAB EDGE
  - 5.06 6" METAL STUD FRAMING
  - 5.07 STRUCTURAL STEEL FRAMING
  - 5.55 UNIVERSAL BYPASS STEEL CLIP
  - 5.56 DEFLECTION TRACK
  - 6.02 WOOD BLOCKING
  - 6.03 SOLID SURFACE WINDOW STOOL WITH CHAMFERED EDGES
  - 7.05 MCM PANEL, SOFFIT
  - 7.08 PROTECTION COURSE
  - 7.09 MINERAL FIBER BOARD INSULATION
  - 7.11 BACKER ROD AND SEALANT
  - 7.13 2 PLY SBS ROOFING SYSTEM
  - 7.21 COUNTERFLASHING
  - 7.32 GRAVEL STOP FASCIA
  - 7.36 MCM PANEL
  - 8.01 ALUM STOREFRONT, CURTAINWALL, OR WINDOW SYSTEM- SEE OPENING SCHEDULE
  - 8.09 BACK PANEL
  - 8.10 STEEL CURTAIN WALL ANCHOR W/ NON-METALLIC SHIMS
  - 9.01 5/8" GYPSUM BOARD, SEE FINISH PLAN FOR FINISH MATERIAL
  - 9.04 5/8" EXTERIOR SHEATHING
  - 23.02 DUCTWORK, SEE MECHANICAL

LEGEND

**ASHE I BROUSSARD I WEINZETTLE ARCHITECTS**

**TIPTON ASSOCIATES**

CONSULTANTS  
Monsieur Butler & Associates, LLC  
CABDO Landscape Architecture, LLC  
Fox Neale Engineering, LLC  
Sala O'Brien  
Mechanical Engineering  
Associated Design Group, Inc.  
Electrical  
Specialty Architecture

**LOUISIANA STATE UNIVERSITY ALEXANDRIA**  
**DOWNTOWN HEALTH SERVICES CENTER**  
800 JACKSON ST.  
ALEXANDRIA, LA 71301

ISSUE FOR BID

PROJECT # 19-402-23-01  
ARCH PROJECT # 2023.01 / 1531.00-23  
SITE ID: NEW SITE CODE: 4-40-033  
DATE OCTOBER 10, 2025

Ashe Broussard Weinzettl Architects, LLP  
Tipton Associates APAC, A Joint Venture  
301 Jackson Street, Suite 205  
Alexandria, LA 71301

NO.	REVISION	DATE
1	Addendum No. 2	12.03.2025

Professional seals and stamps for Ashe Broussard Weinzettl Architects, LLP and Tipton Associates, including a Louisiana State Seal and a Professional Engineer Seal.

**WALL SECTIONS**

**A351**